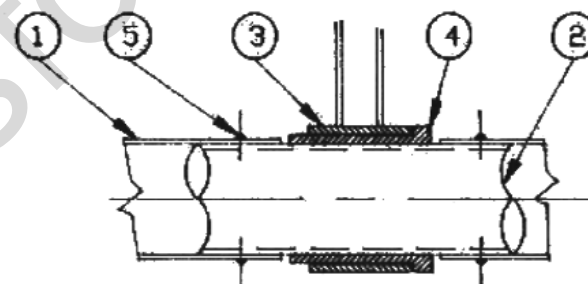
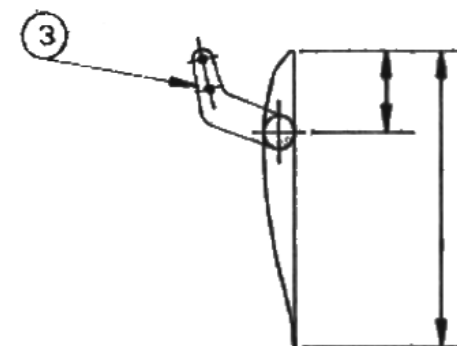
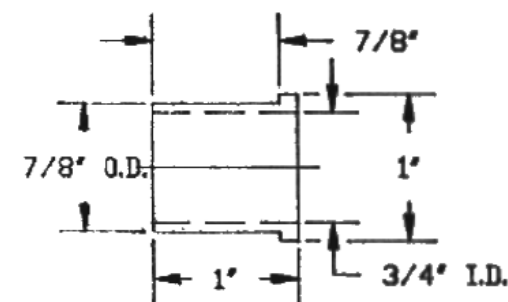


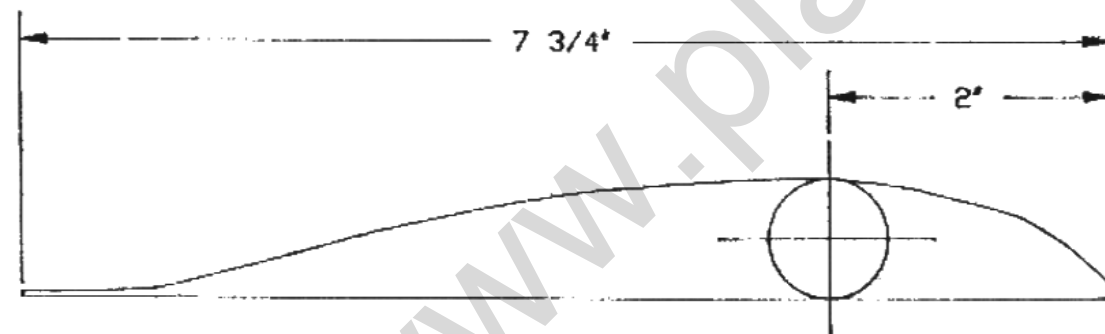
ITEM	QTY.	DESCRIPTION
1	1	FLAPERON DWG. No. RAV-20
2	2	3/4"ØX.035X150"LG 6061T6
3	5	HINGE PT. No. WG 11
4	5	BUSHING 1" O.D.X3/4" I.D. NYLON
5	18	PDP RIVET 3/32"X1/8" ALLUM.
6	1	8X2X17" LG



SECTION A-A



BUSHING DETAIL

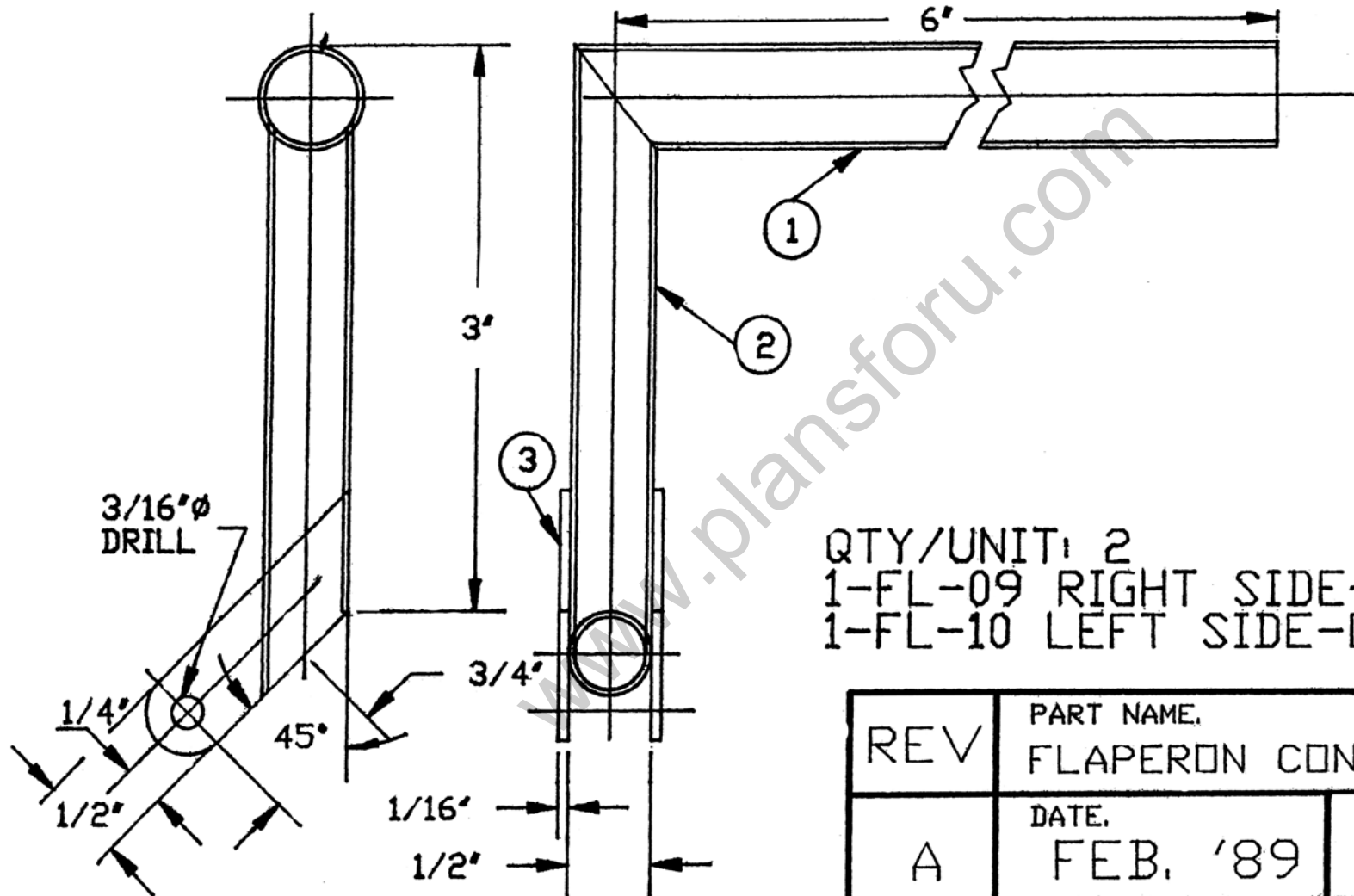


FLAPERON

QTY. 1 - WG-07 LEFT SIDE-SHOWN
QTY. 1 - WG-08 RIGHT SIDE-OPPOSITE

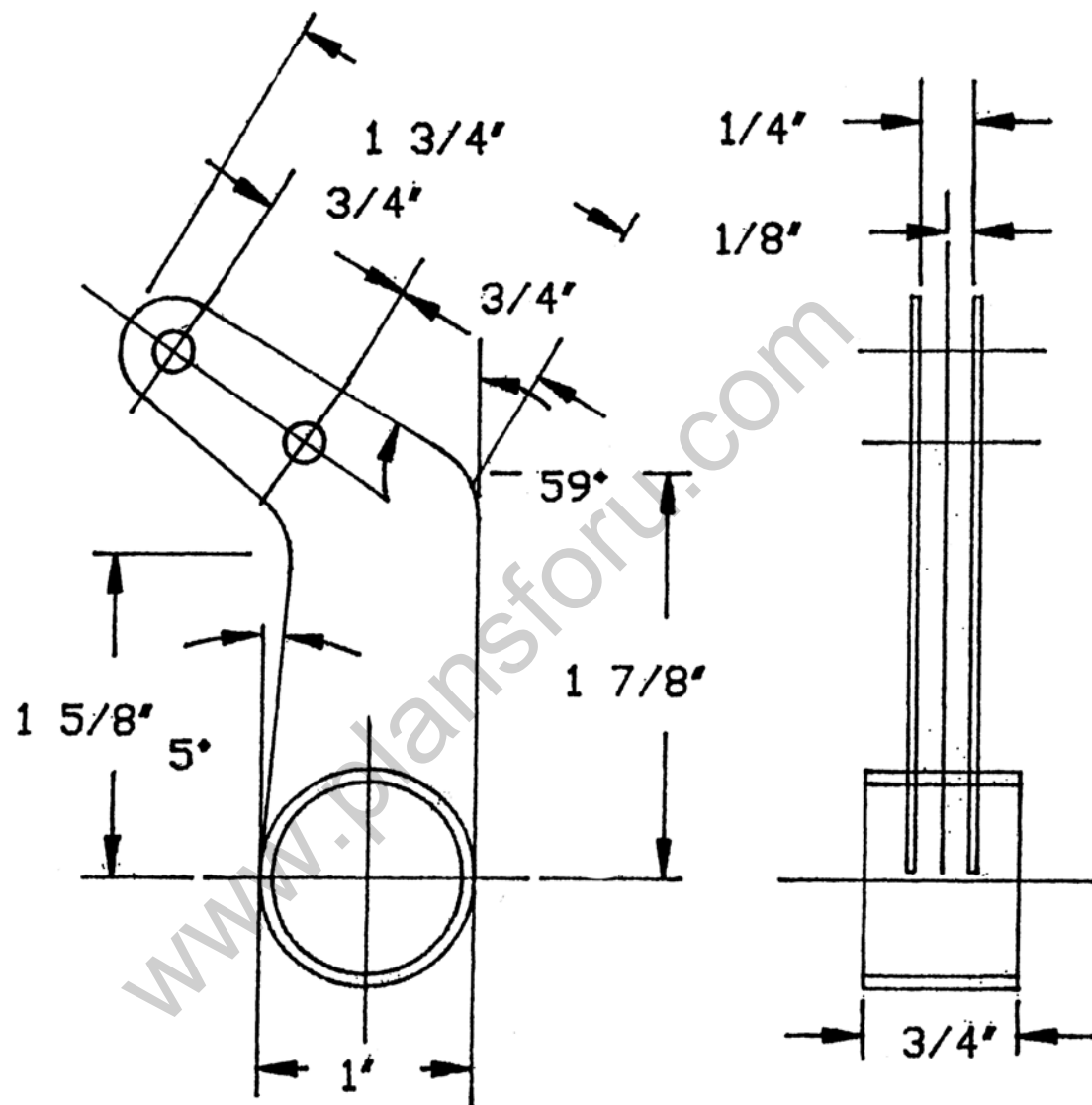
PART NAME. FLAPERON ASS'Y	
DATE. FEB. '89	
PART NOS WG 07/08	DWG. RAV-21

ITEM	QTY	DESCRIPTION	
4	2	.062 SHT	4130N
5	1	5/16"Øx.065x7/8	4130N
6	1	.062 SHT	4130N



QTY/UNIT: 2
 1-FL-09 RIGHT SIDE-SHOWN
 1-FL-10 LEFT SIDE-OPPOSITE

REV	PART NAME.	
	FLAPERON CONTROL HORN	
A	DATE.	
	FEB. '89	
DATE.	PART NOS.	DWG. No.
SEPT/26/86	FL-09/10	RAV-22



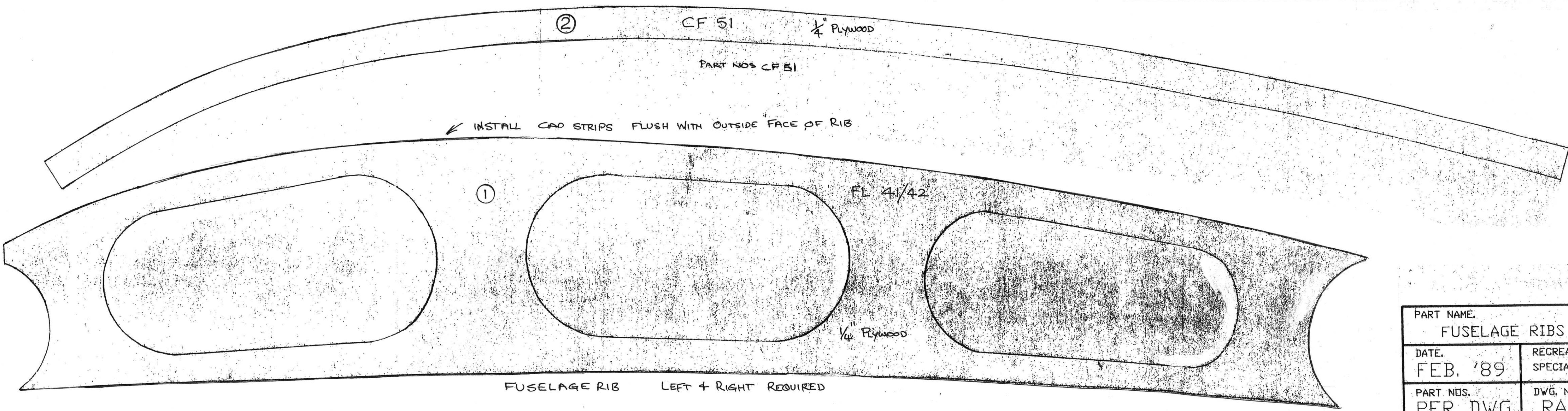
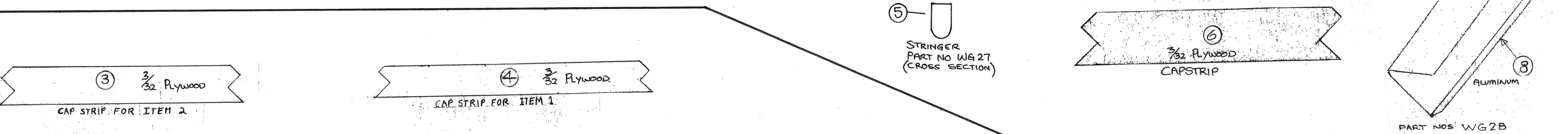
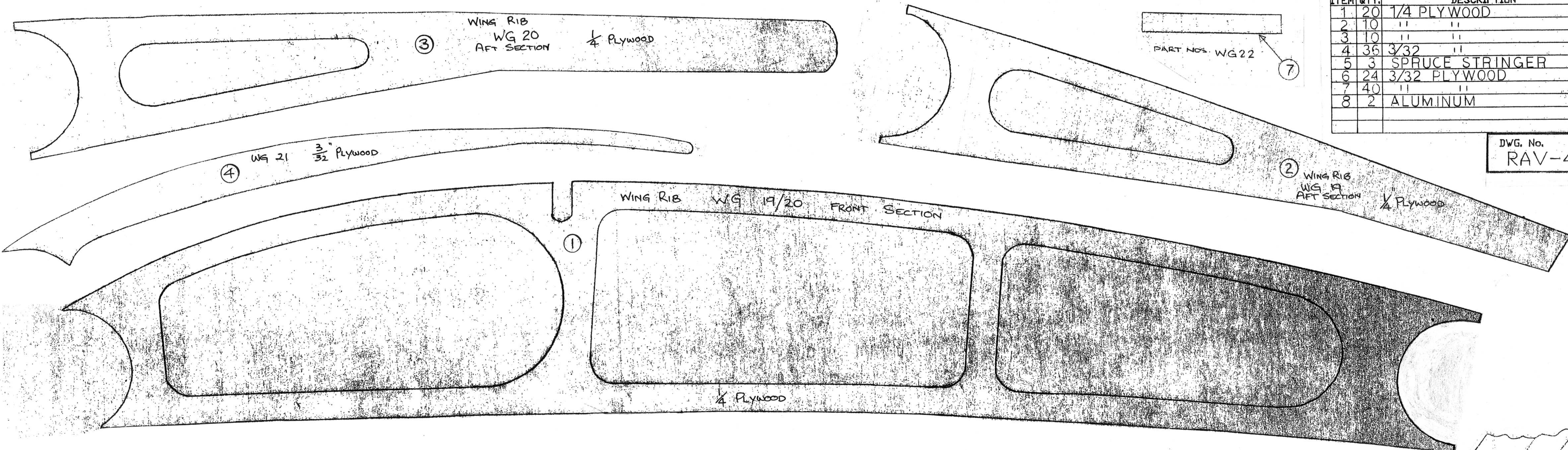
ITEM	QTY.	DESCRIPTION	
1	1	1"ØX.058X3/4"S TUBE	4130N
2	2	.040 SHT.	4130N

QTY/UNIT: 10

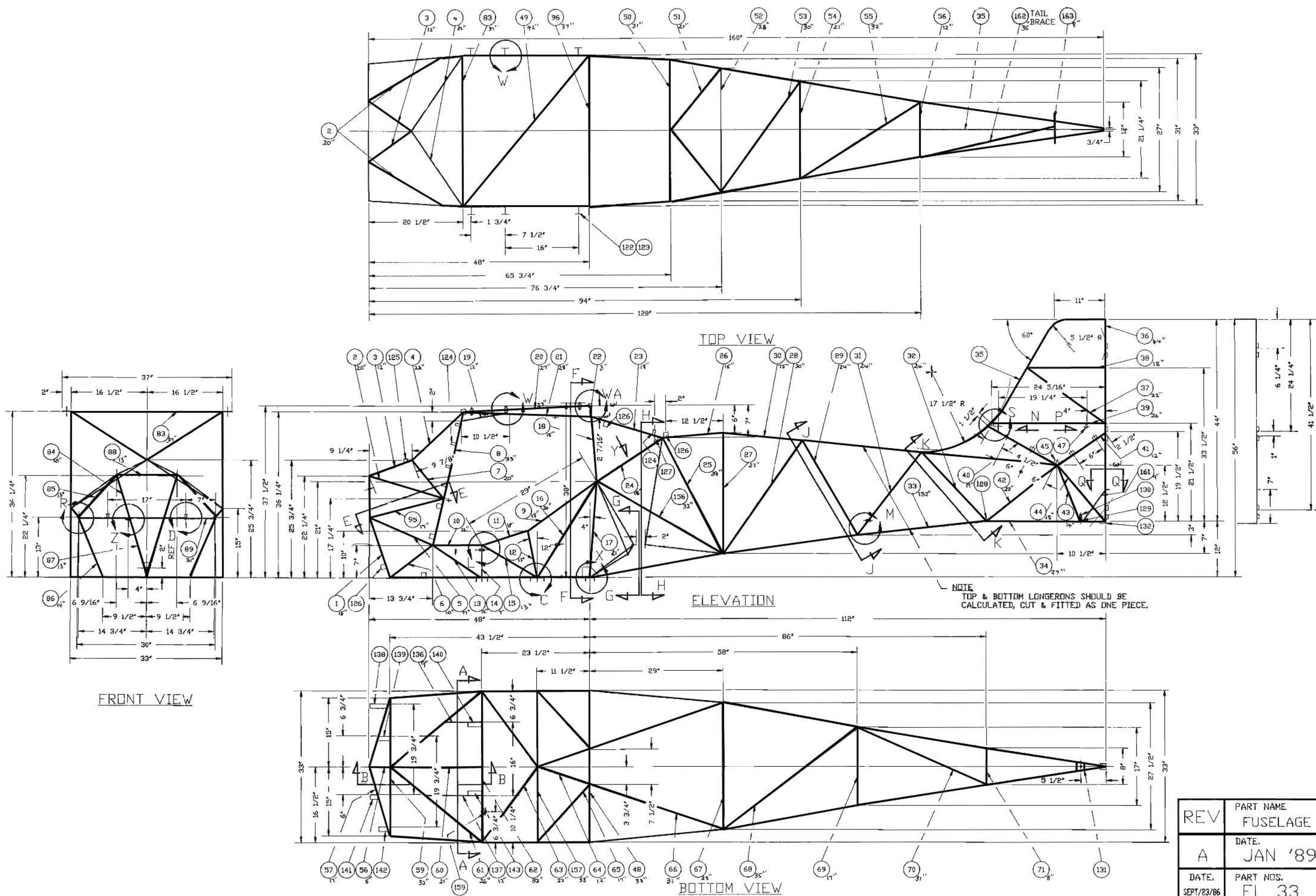
REV	PART NAME.	
	FLAPERON HINGE BRKT.	
A	DATE.	
	JAN '89	
DATE.	PART NOS.	DWG. No.
SEPT/29/86	WG 11	RAV-23

ITEM	QTY.	DESCRIPTION
1	20	1/4 PLYWOOD
2	10	" "
3	10	" "
4	36	3/32 " "
5	3	SPRUCE STRINGER
6	24	3/32 PLYWOOD
7	40	" "
8	2	ALUMINUM

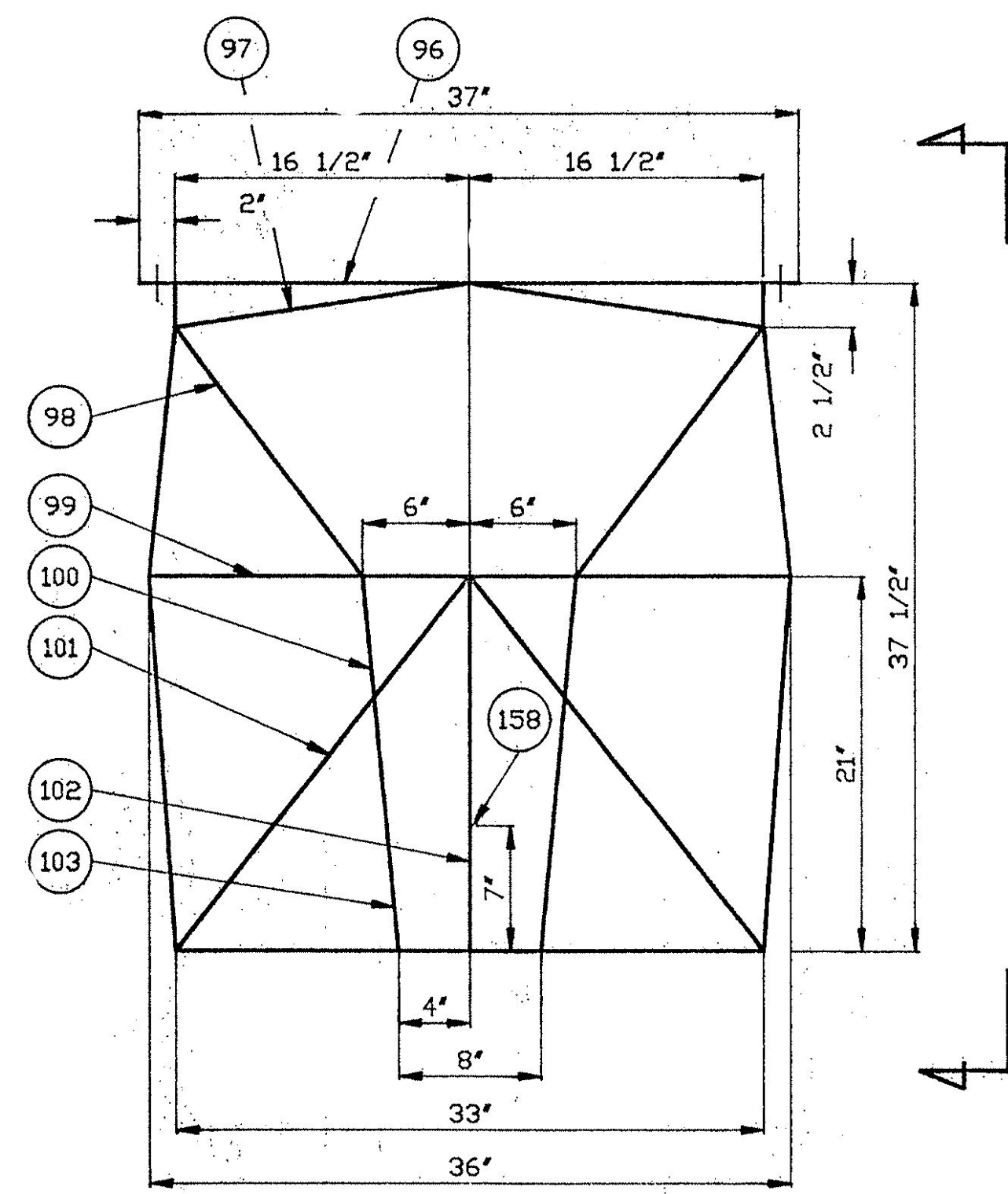
DWG. No.
RAV-43



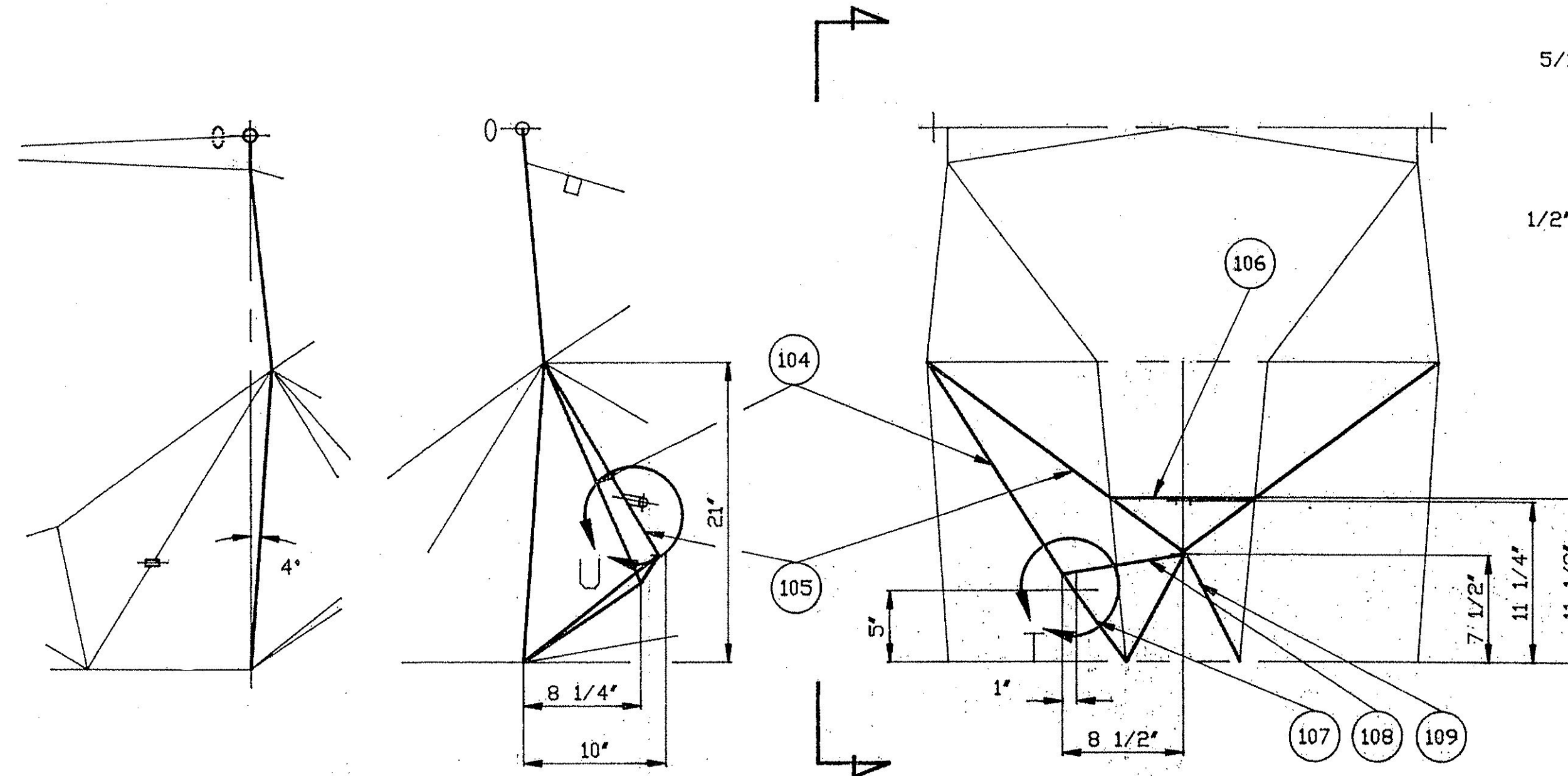
PART NAME. FUSELAGE RIBS	
DATE. FEB. '89	RECREATIONAL SPECIALTIES LTD.
PART NOS. PER DWG.	DWG. No. RAV-24



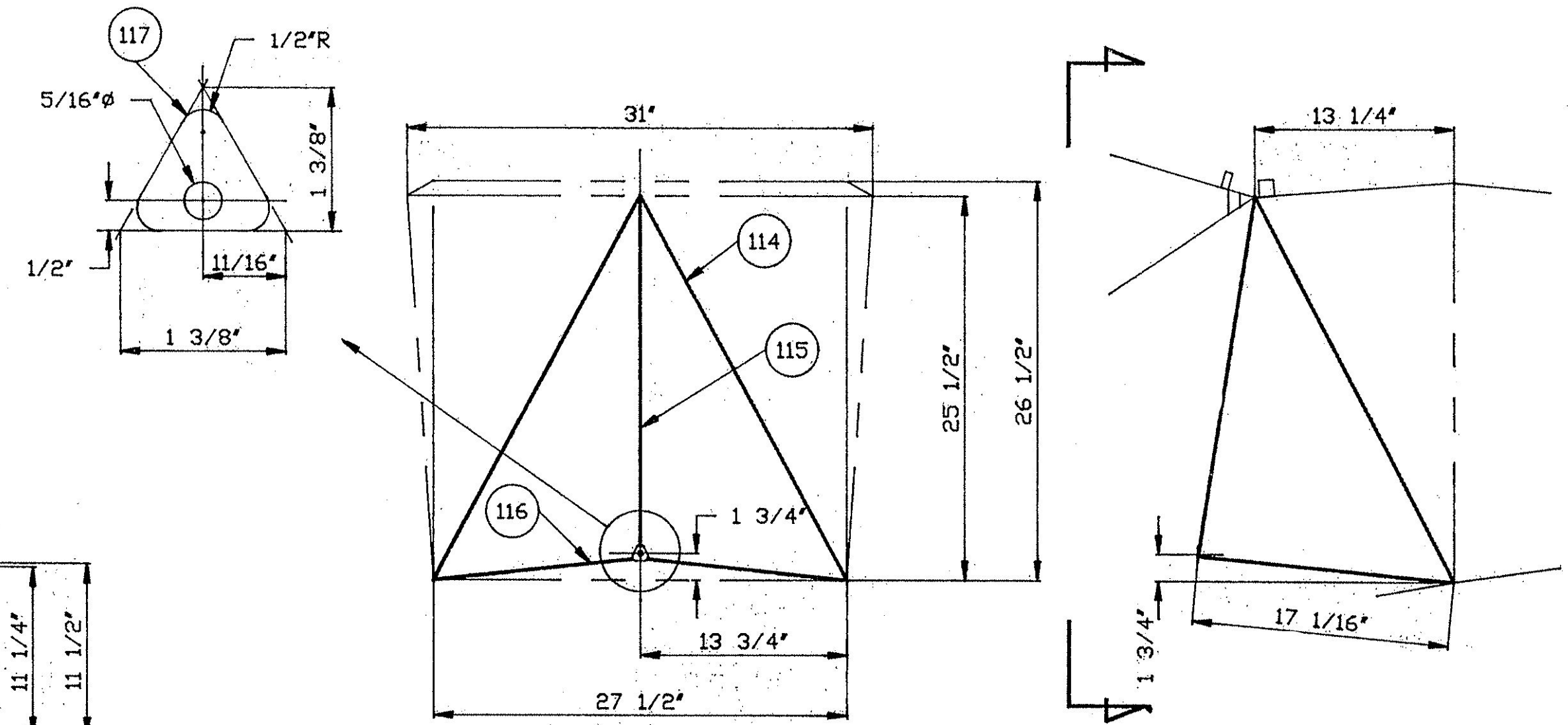
REV	PART NAME	SHT. 1 OF 6
A	FUSELAGE	
DATE.	JAN '89	
DATE.	PART NOS.	DWG. No.
SEPT/23/86	FL 33	RAV-25-A



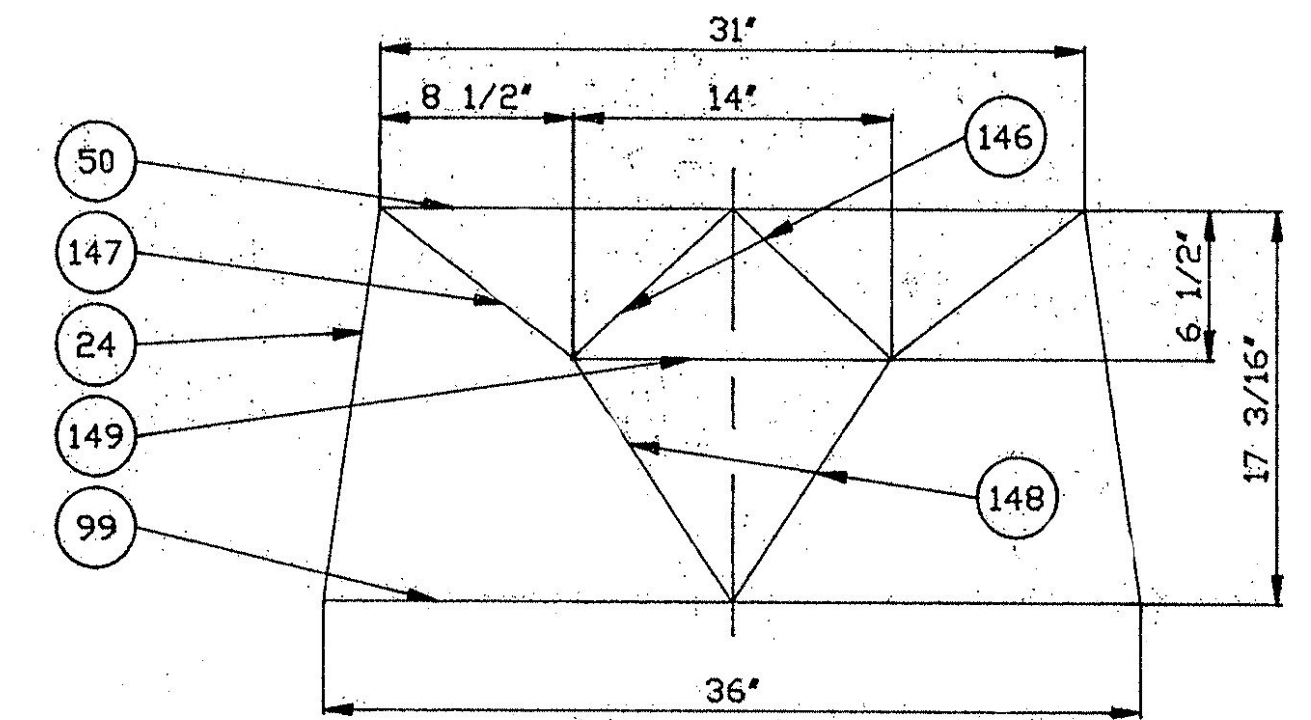
SECTION F-F



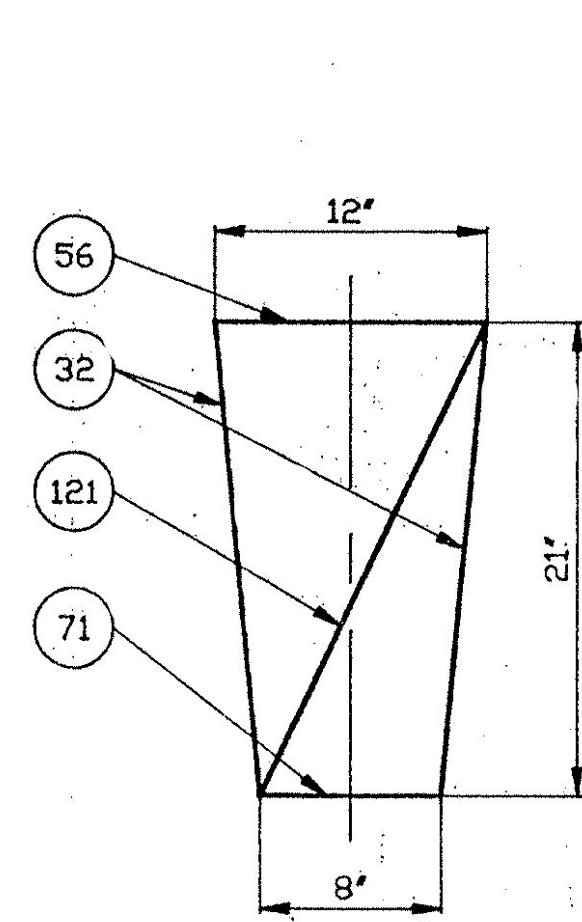
SECTION G-G



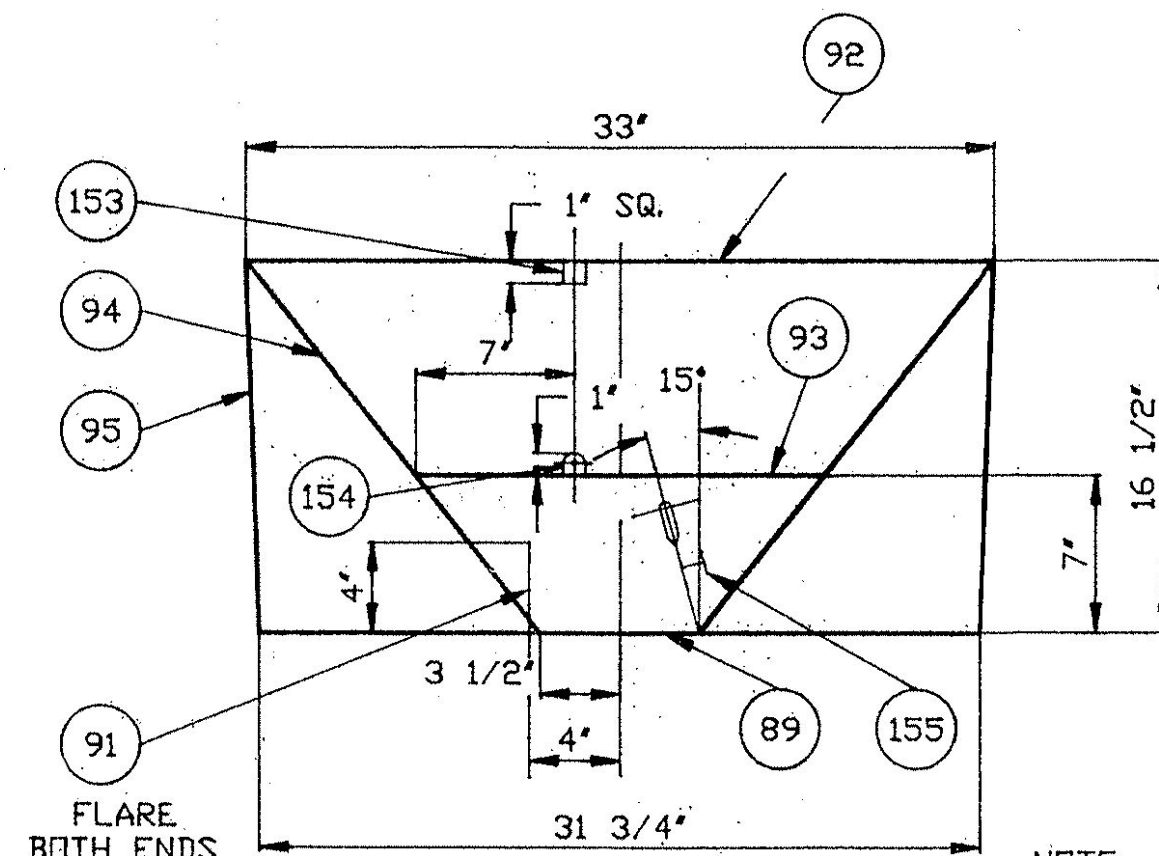
SECTION H-H



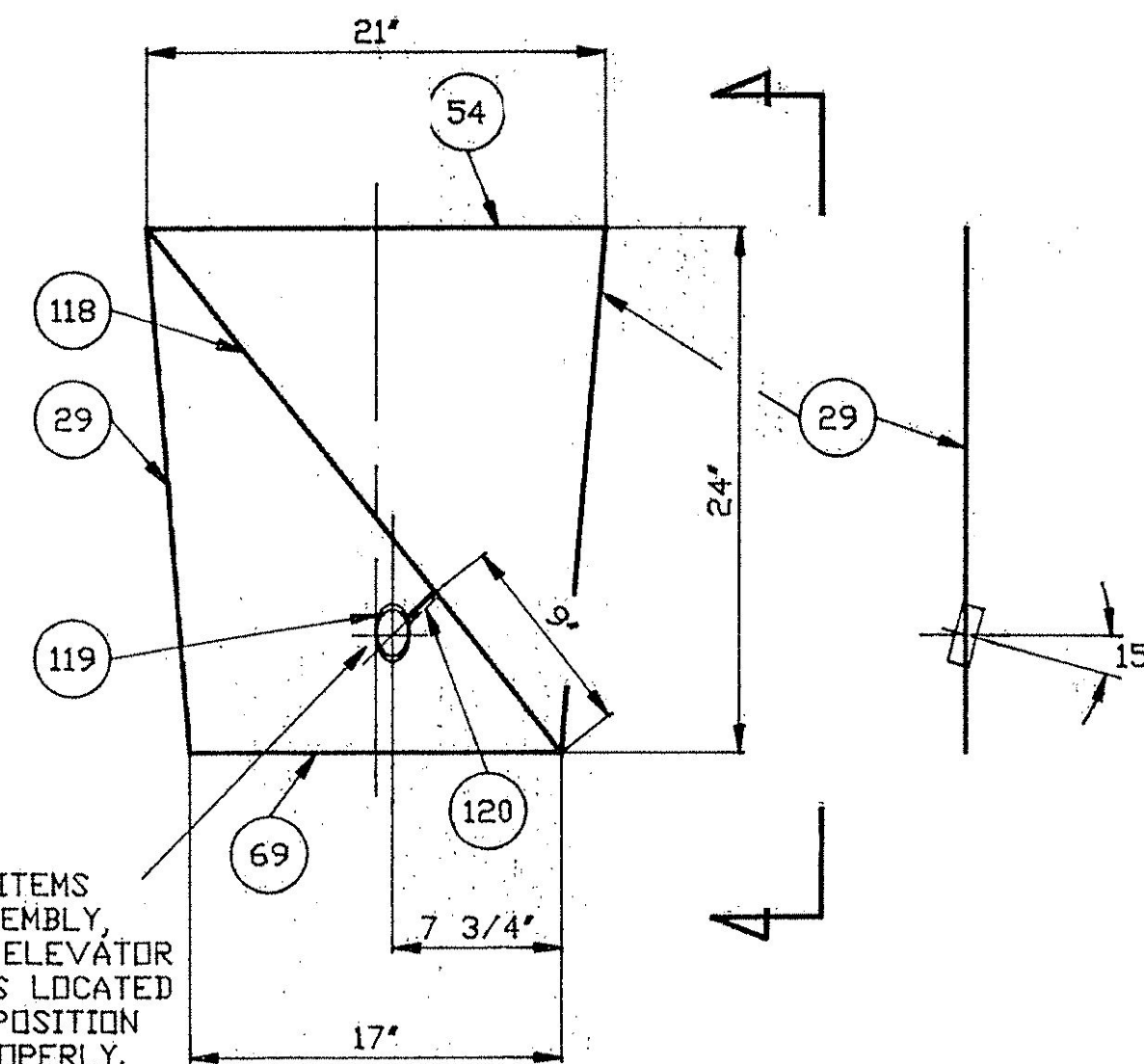
VIEW Y



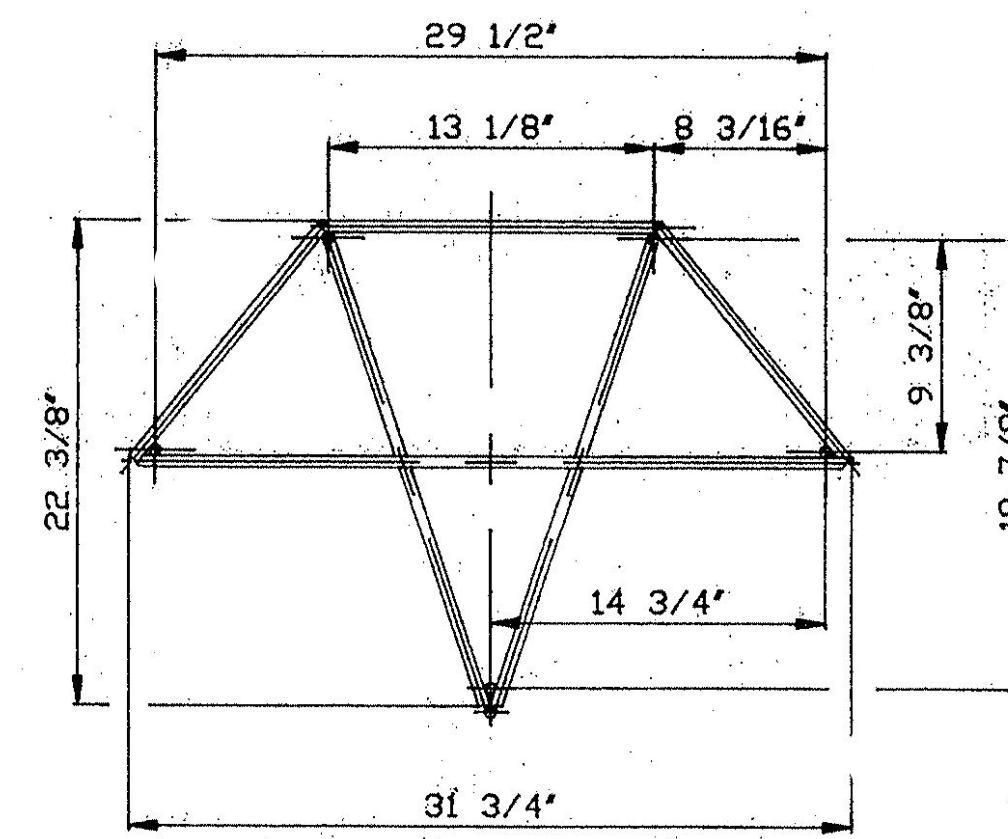
SECTION K-K



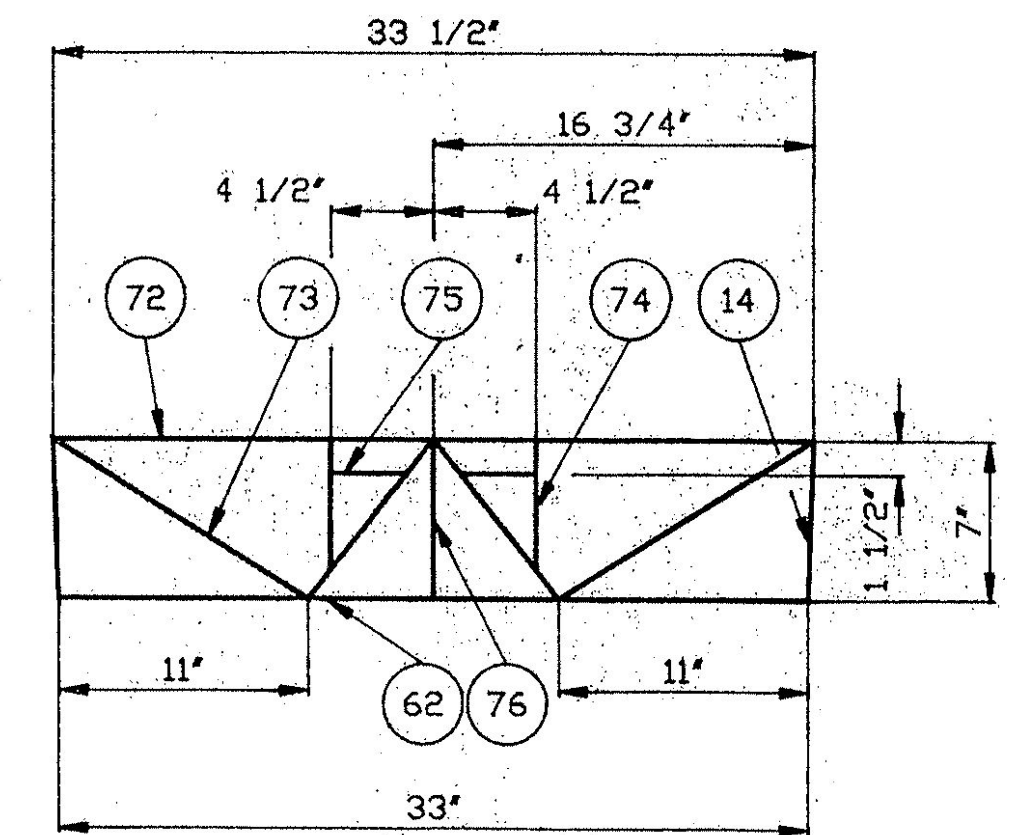
SECTION E-E



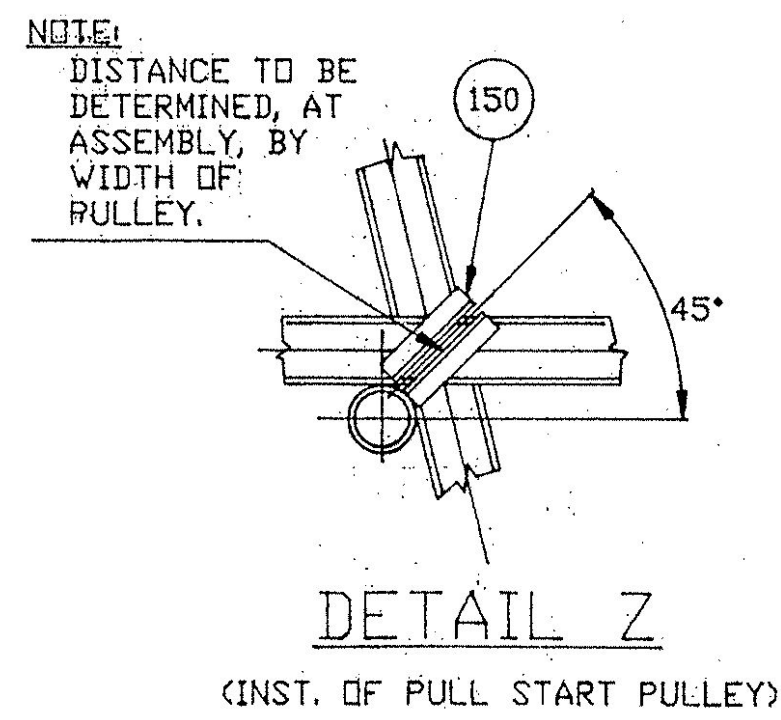
SECTION J-J



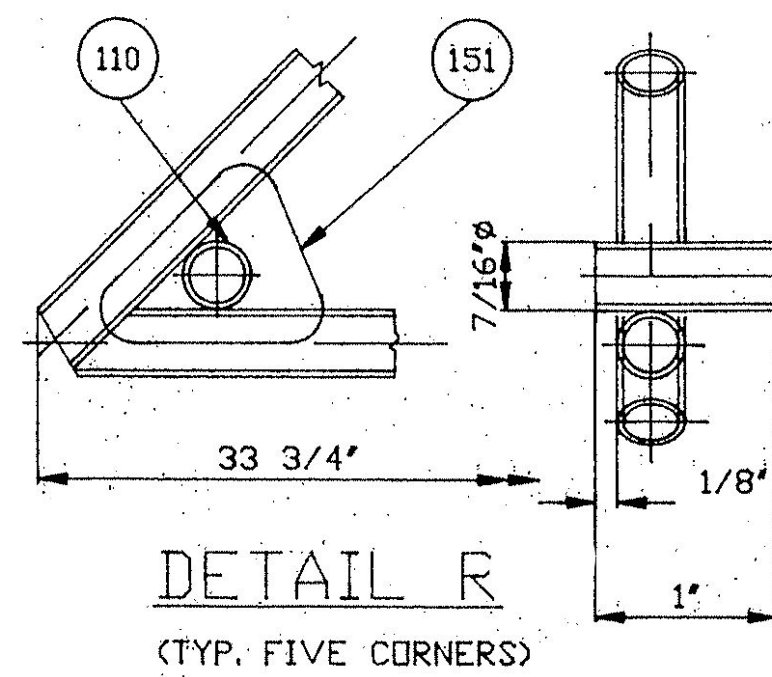
ENGINE MOUNT LOCATIONS



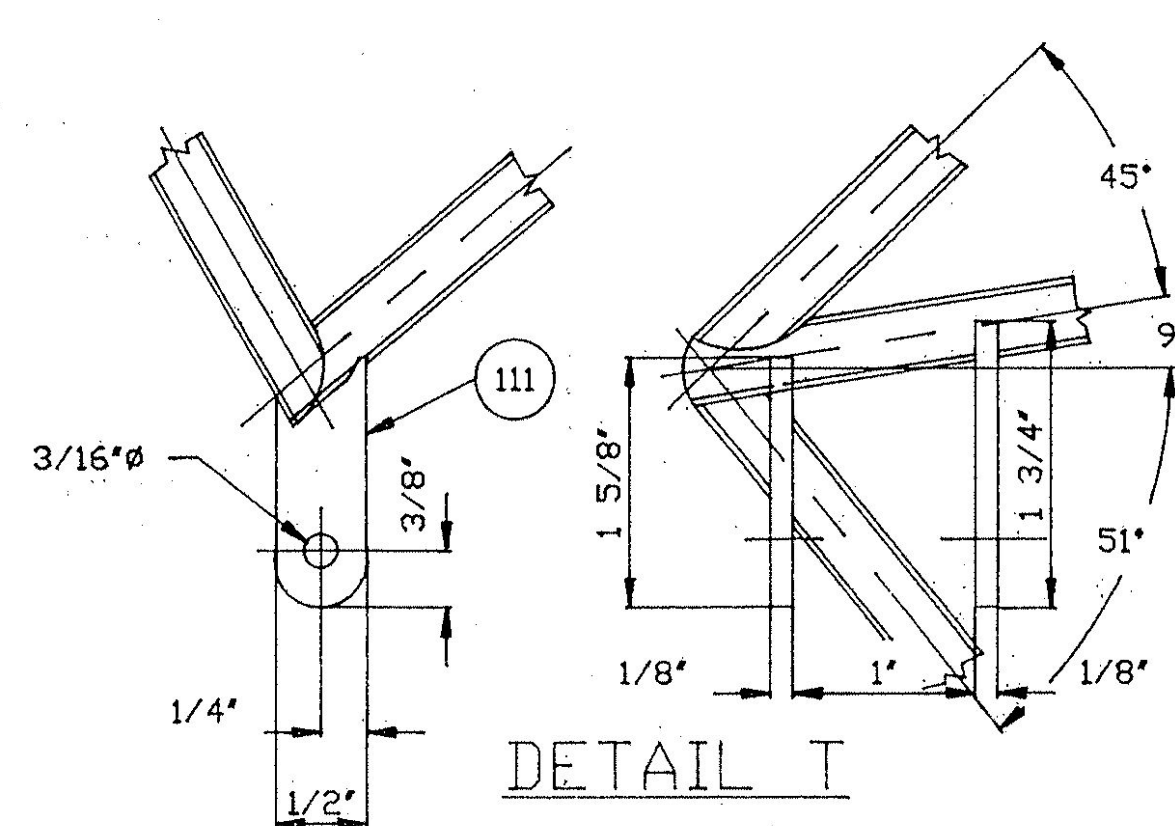
SECTION A-A



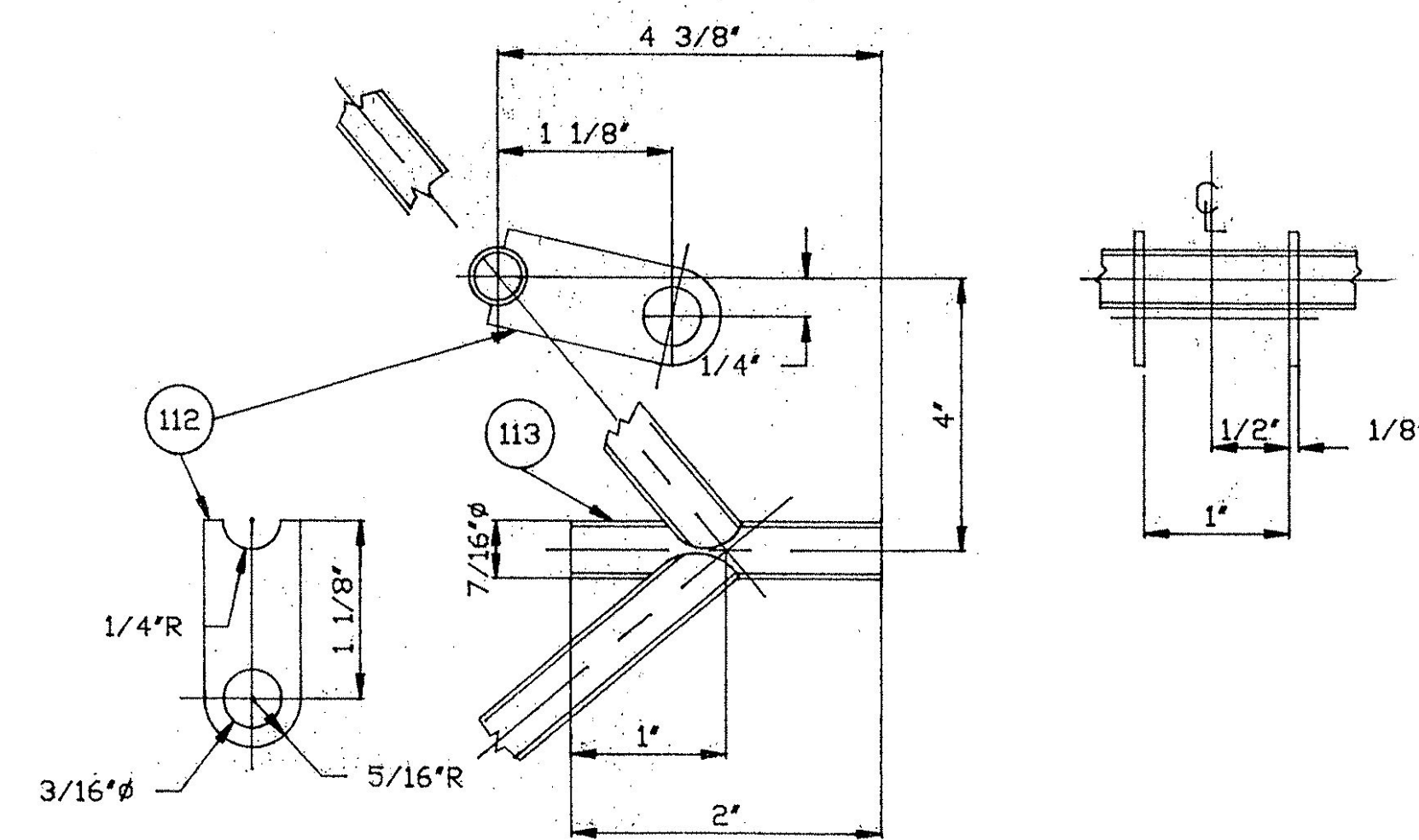
DETAIL Z
(INST. OF PULL START PULLEY)



DETAIL R
(TYP. FIVE CORNERS)

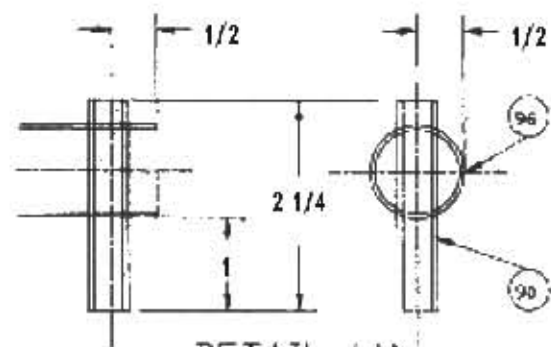


DETAIL T



DETAIL U

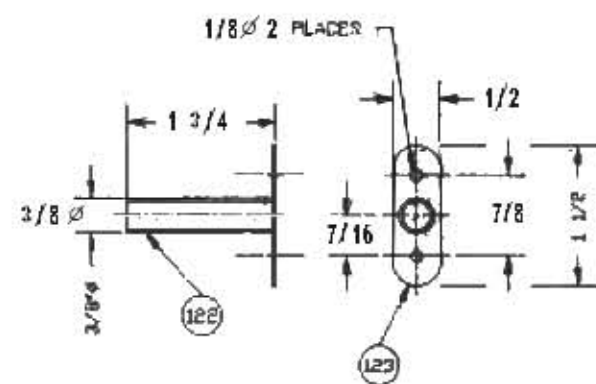
REV.	PART NAME. FUSELAGE	SHT. 2
A	DATE. JAN '89	
DATE. SEPT/23/86	PART NOS. FL 33	DWG. No. RAV-25-B



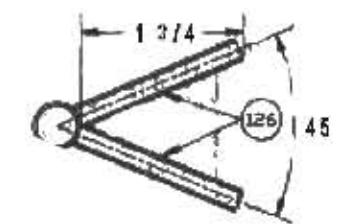
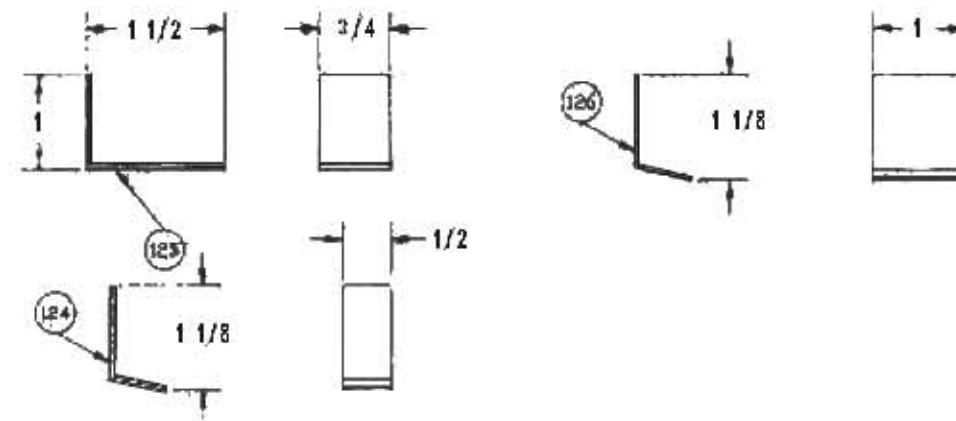
DETAIL WA

(TYP. FOUR PLACES)

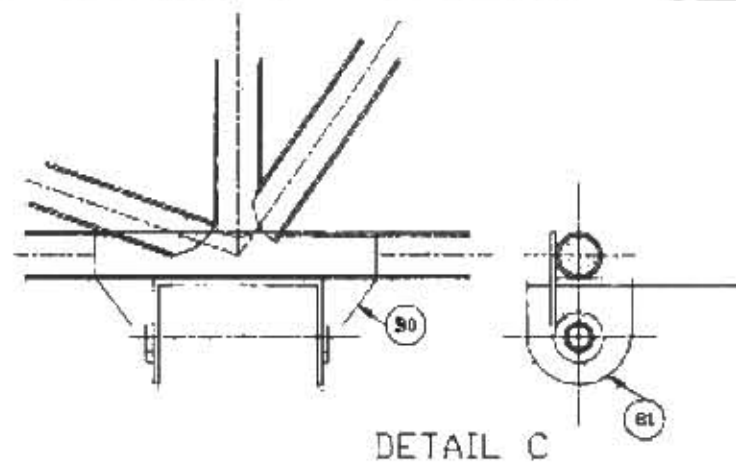
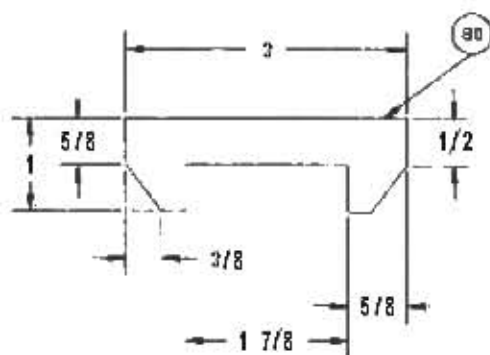
NOTE
PART 96 IS DRILLED ONLY
PART 90 IS FITTED AFTER ALL WELDING ON FUSELAGE
IS COMPLETED



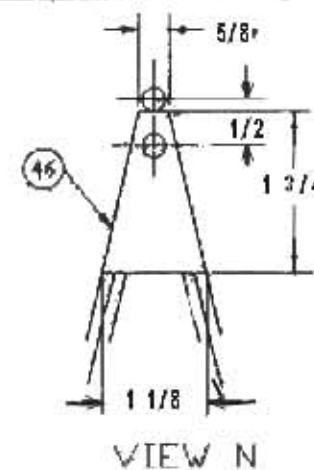
DETAIL W



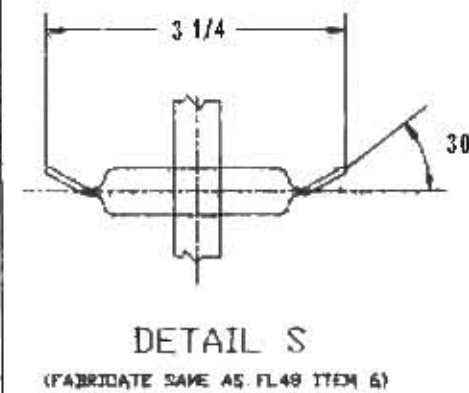
SECTION Q-Q



DETAIL C

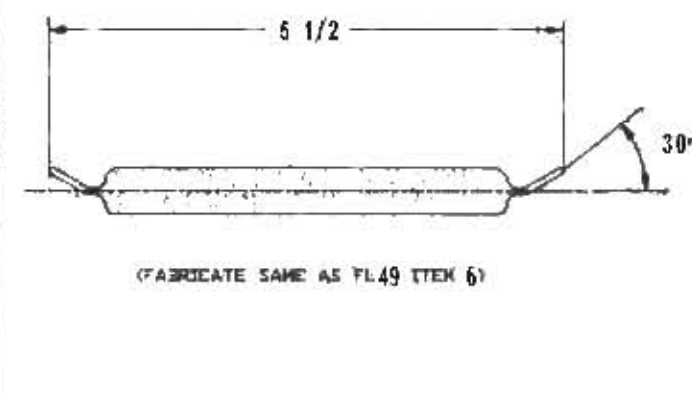


VIEW N

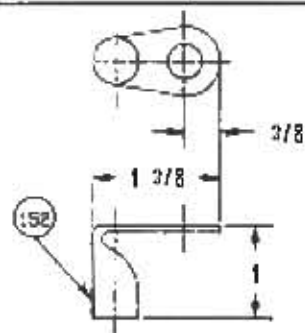


DETAIL S

(FABRICATE SAME AS FL49 ITEM 6)

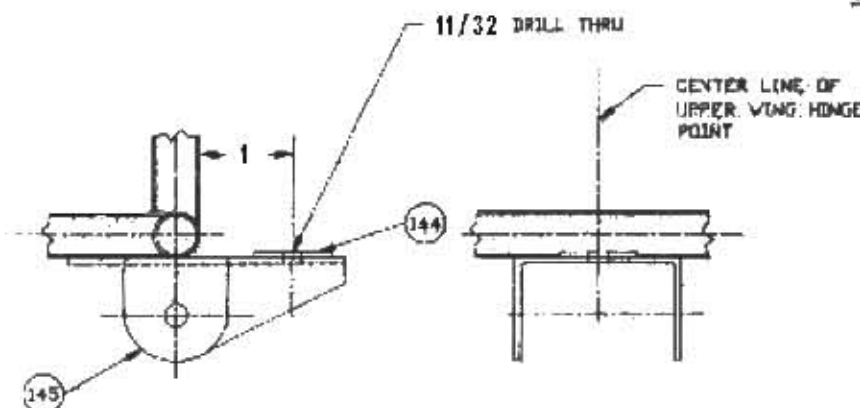
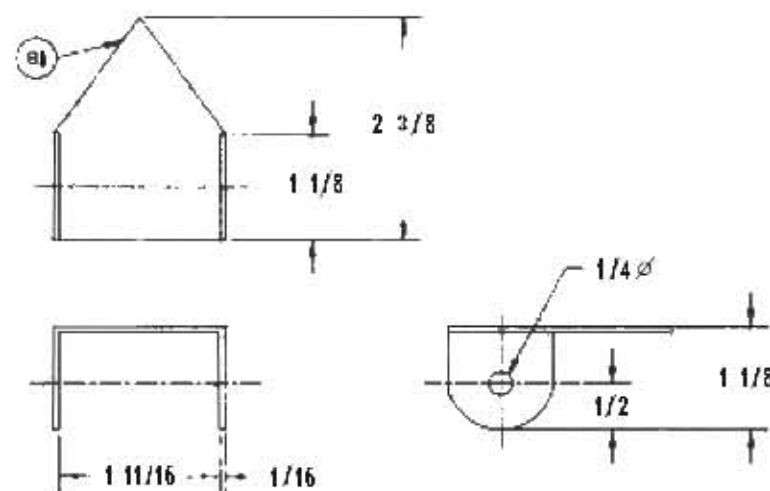


(FABRICATE SAME AS FL49 ITEM 6)

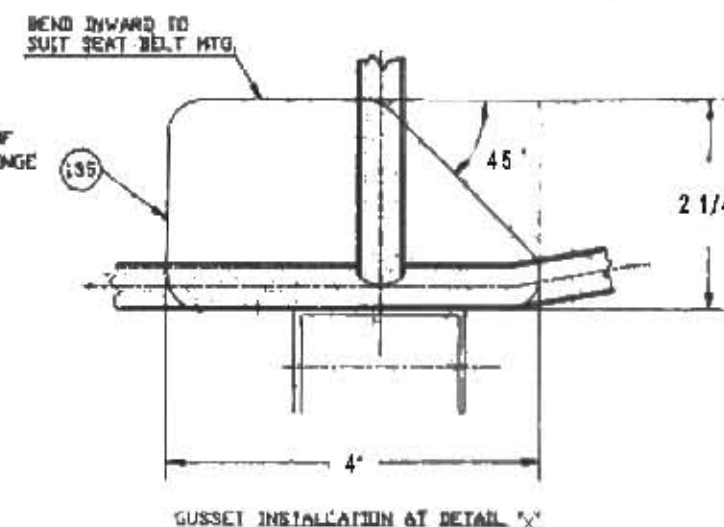


DETAIL D

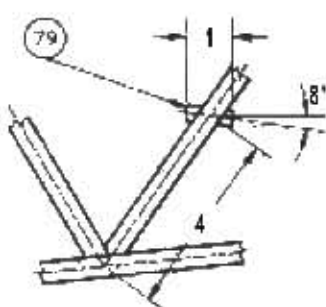
NOTE
TO BE FITTED & WELDED
USING GASTANK FOR SET UP



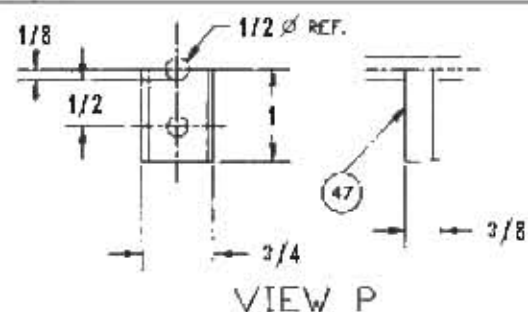
DETAIL X



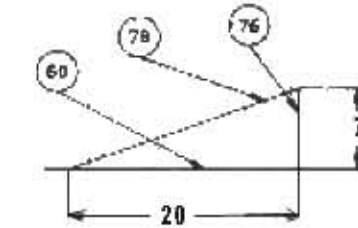
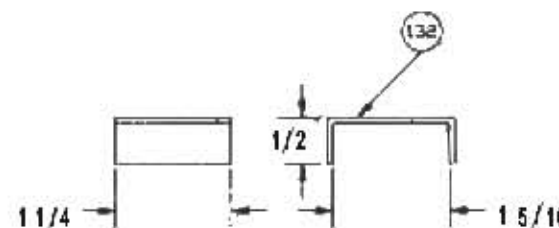
GUSSET INSTALLATION AT DETAIL "X"



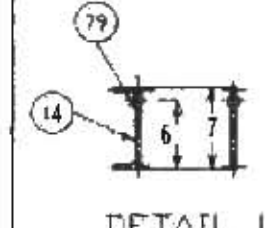
DETAIL M



VIEW P



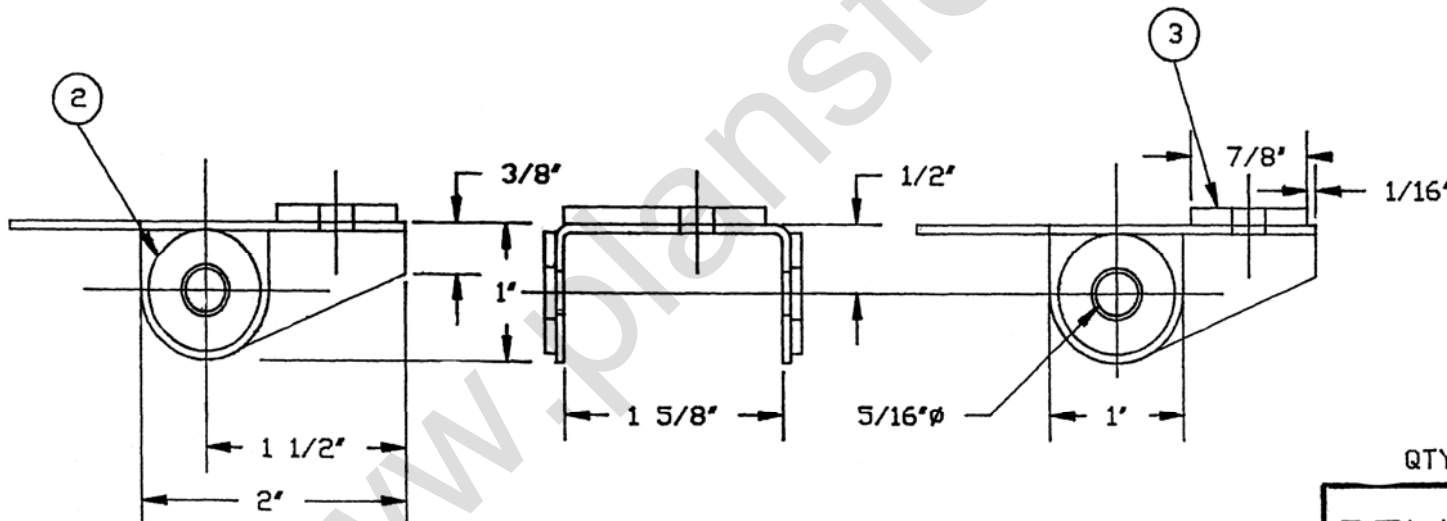
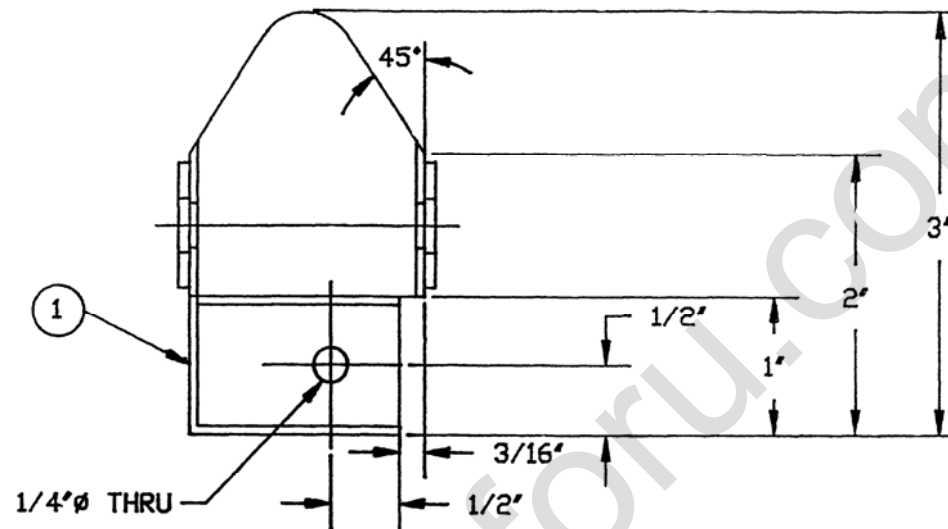
SECTION B-B



DETAIL L

REV	PART NAME	SHT.
A	FUSELAGE	3
DATE	JAN '89	
DATE	PART NOS.	DWG. No
SEP/23/88	FL 33	RAV-25-C

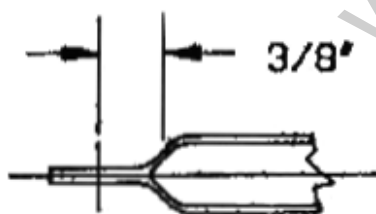
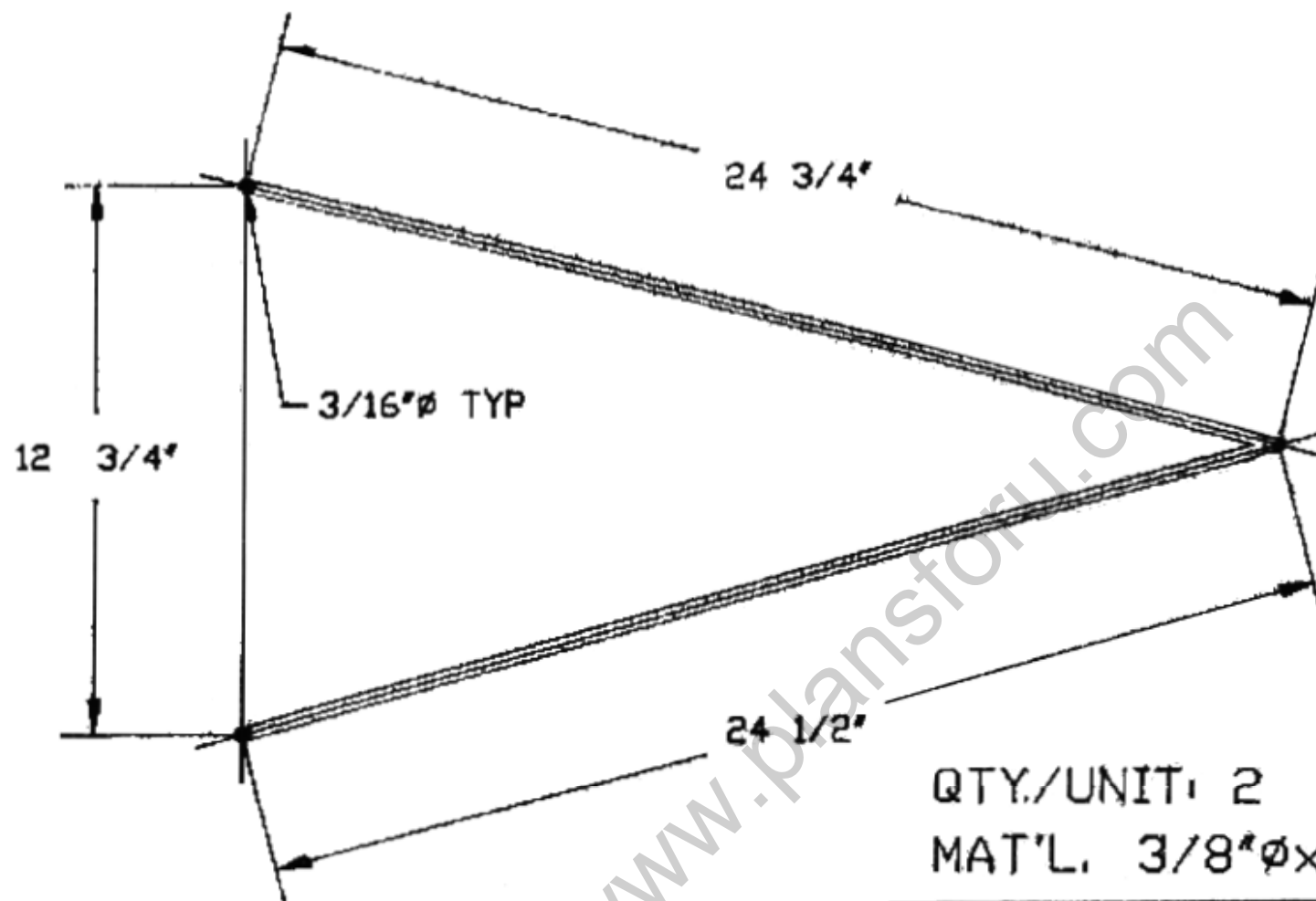
ITEM	QTY.	DESCRIPTION	
1	1	.065 SHT.	4130N
2	2	5/16" STD. WASHER	4130N
3	1	1 1/2"X7/8"X1/8"PL.	4130N



FL 58: LEFT SIDE-SHOWN
FL 59: RIGHT SIDE-OPPOSITE

QTY/UNIT: 2

REV.	PART NAME	
	WING STRUT MTG. BRKT.	
A	DATE.	
	JAN '89	
DATE.	PART NOS.	DWG. No.
SEPT/25/86	FL 58/59	RAV-27



TYP. END CRIMPING

QTY./UNIT: 2

MAT'L. 3/8"Øx.035x52 LG

PART NAME.

STABILIZER BRACE

DATE.

FEB. '89

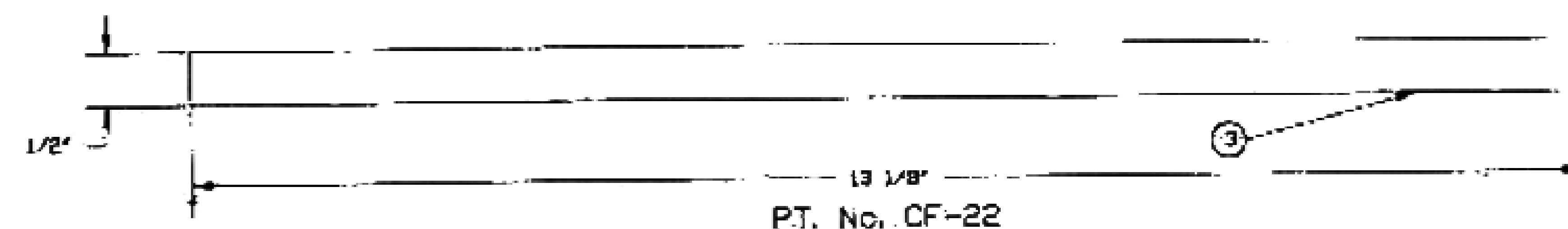
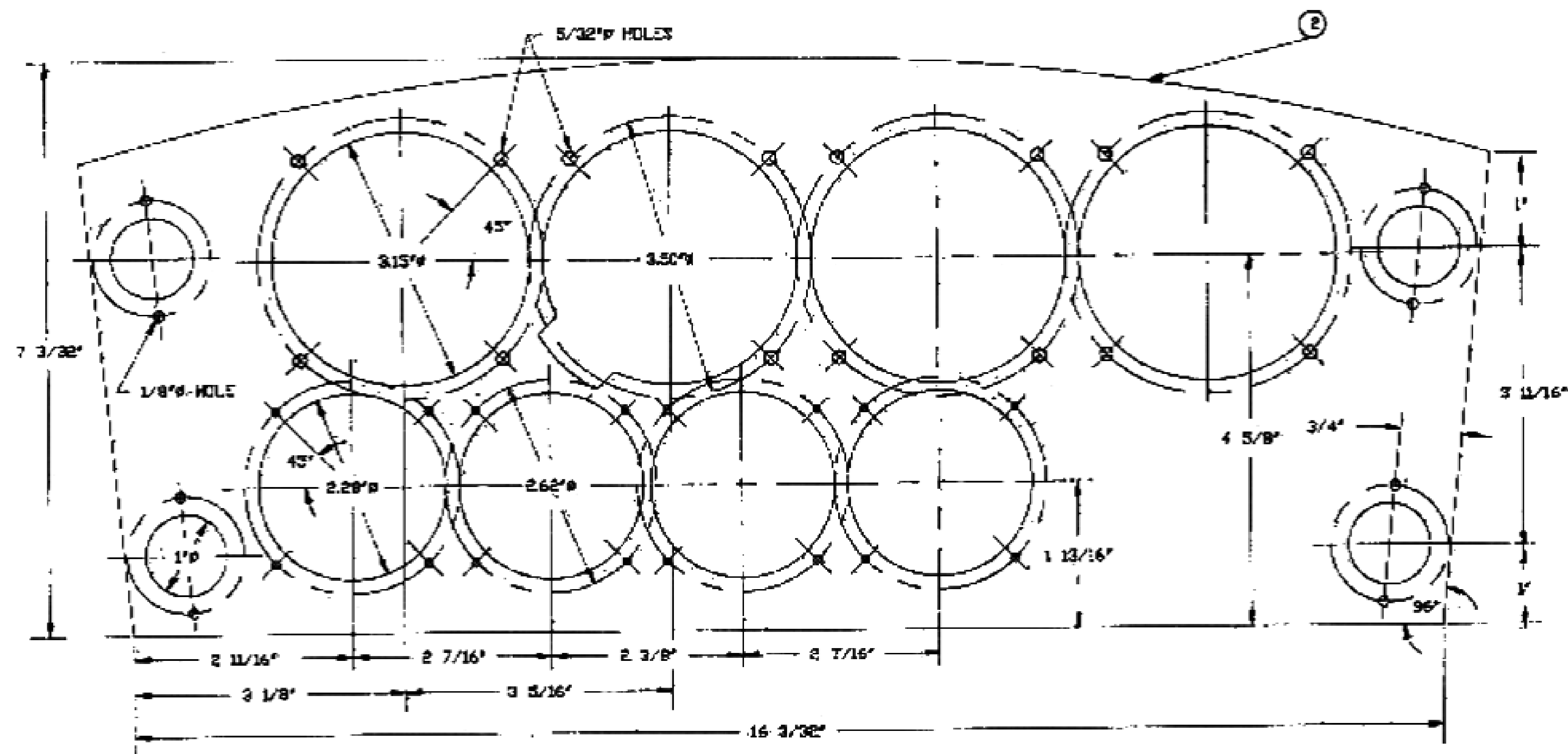
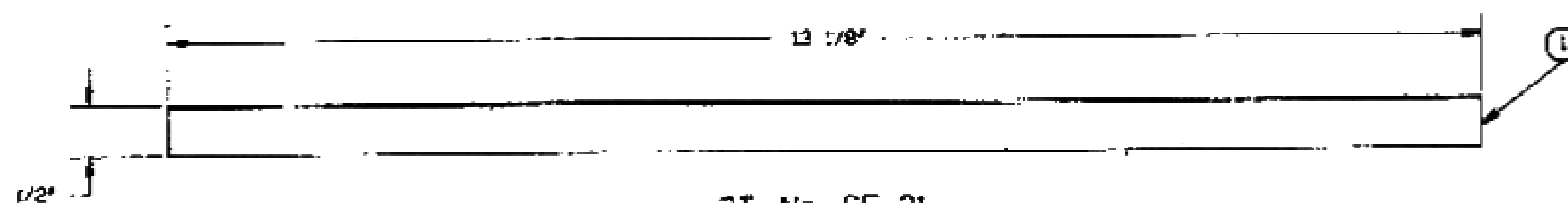
PART NOS.

FL-35

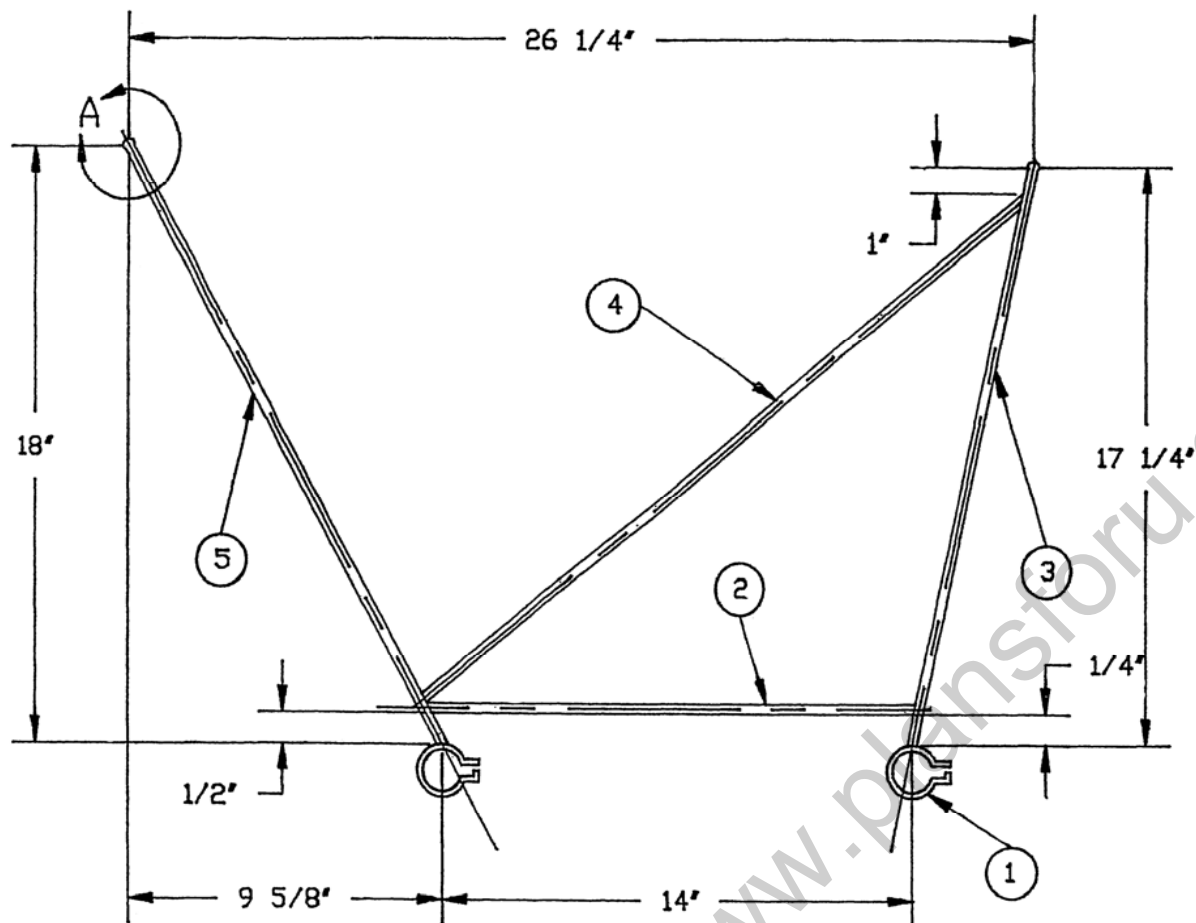
DWG. No.

RAV-28

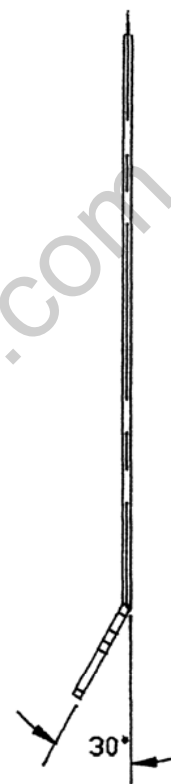
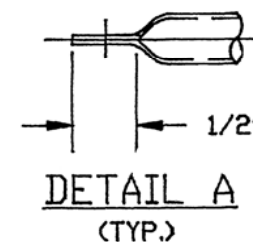
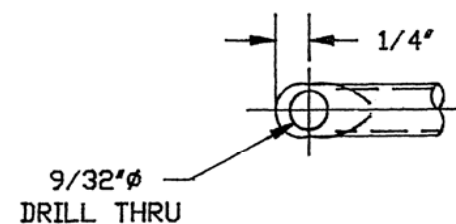
STEP	QTY.	DESCRIPTION	
1	1	1/8"x1/8"x.025	6061 T6
2	1	.060	6061 T6
3	1	.125	6061 T6



PART NAME. INSTRUMENT PANEL	
DATE. FEB, '89	
PART NOS. PER DWG	DWG No. RAV-29



ITEM	QTY.	DESCRIPTION	
1	2	.040 SHT. X1/2"X5"	4130N
2	1	3/8"ØX.035X14 1/2"	4130N
3	1	3/8"ØX.035X17 1/2"	4130N
4	1	3/8"ØX.035X20 1/4"	4130N
5	1	3/8"ØX.035X22"	4130N



QTY/UNIT: 2
 QTY 1 WG 14 L.S.-SHOWN
 QTY 1 WG 15 R.S.-OPPOSITE

REV.	PART NAME. JURY STRUT	
A	DATE. FEB. '89	
DATE. SEPT/26/86	PART NOS. WG-14/15	DWG. No. RAV-30